

# Message from the Board President

THANK YOU FOR SUPPORTING COMMUNITY SERVICE FUND. Thank you for letting us connect you with causes you care most about!

In the last year we've really clarified what it is you are helping us accomplish. It all comes down to 3 simple things:

**1) Serving Donors** – Community Services Fund gives the power to you! You choose where to invest your dollars. You impact exactly the causes that touch your heart.

Whether you give to parks and trails, civil rights, substance abuse, domestic violence or any of our other 30 members; your gifts go where you want them to and nowhere else.

**2) Serving Causes** – Community Services Fund welcomes a wide variety of member organizations. Because we believe in your power to make wise giving choices, we don't limit our membership by defining what programs they have to offer.

Last year we vetted all 30 member organizations for membership in the fund—bringing you more options to make a difference. And, bringing them new opportunities to connect with you!

**3) Serving Community** – Community Services Fund member agencies value your support as they work to preserve resources, expand knowledge, encourage creativity, protect rights and meet basic needs in their community.

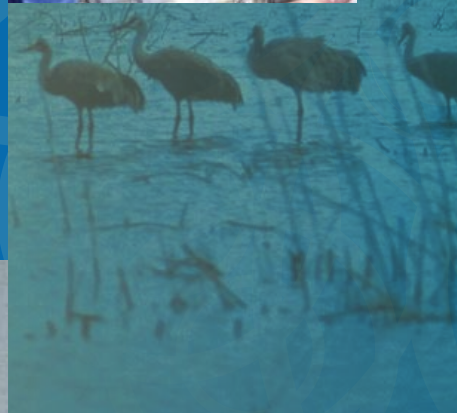
Everyone in the community benefits when high-quality, responsible organizations meet their missions. Go check out our website for detailed impact stories!

So, once again thank you. We're proud of what you've helped us accomplish and pleased to present this report.



Abbigail Swatsworth

# Annual Report to the Community 2009-2010



**Community Services Fund of Nebraska**

CommunityServicesFund.org



## Community Services Fund connects donors to causes they care about most.

Community Services Fund of Nebraska participates in a variety of workplace campaigns throughout Nebraska. Charitable giving campaigns are conducted with private companies, public employees and other non-profit organizations. By utilizing a completely donor-directed approach, Community Services Fund insures that each contribution supports the causes donors care about most.

Community Services Fund is fortunate to receive a number of gifts that are directed for our operating expenses. Annual campaign contributions for both our member agencies and Community Services Fund are greatly appreciated. Donations are critical to our efforts to promote responsible philanthropy, preserve resources, expand knowledge, encourage creativity and protect individual rights. Thank you for your support.

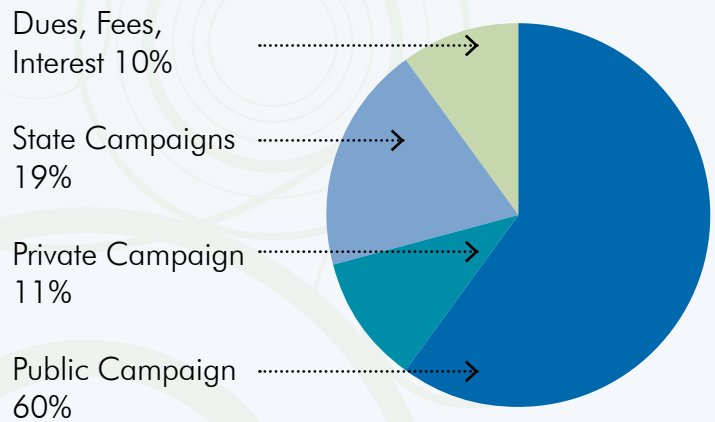
*"I like supporting the causes I really care about in such a simple way. Payroll deduction is convenient – and it gives me such a good feeling knowing that I'm helping other people."*

JoAnne Kissel  
Clark Enersen Partners  
Community Services Fund  
Donor

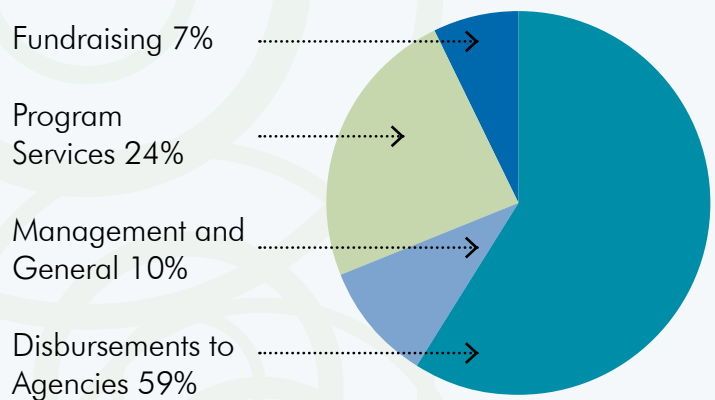


## Financial Information

### 2009-2010 Income



### 2009-2010 Expenses



Additional financial details including the Annual Audit and IRS 990 are available in the 'About Us' section on the Community Services Fund website.

### Community Services Fund Values:

- > The empowerment of all donors to make independent decisions about philanthropy.
- > Cooperation for the greater good.
- > The ability of community donors and volunteers to engage with causes they care about.
- > The independence of our member agencies.
- > Diversity of organizations and missions improving the quality of life for Nebraska.

# 2009-2010 Member Agencies

Community Services Fund (CSF) is a coalition of 30 diverse non-profit Nebraska organizations focused on donor choice in the workplace!

ACLU Nebraska	Nebraska CASA Association
Capital Humane Society	Nebraska Children's Home Society Foundation
CenterPointe, Inc.	Nebraska Domestic Violence Sexual Assault Coalition
Foundation for Lincoln City Libraries	Nebraska Humanities Council
Girl Scouts Spirit of Nebraska, Homestead Service Center	Nebraska Trails Foundation
Houses of Hope	Nebraska Wing Civil Air Patrol/Starbase NE
KZUM FM	NET Foundation for Radio
Lincoln Children's Museum	NET Foundation for Television
Lincoln Children's Zoo	Planned Parenthood of the Heartland
Lincoln/Lancaster Co. Habitat for Humanity	Seniors Foundation
Lincoln Parks Foundation	Voices for Children in NE
Lux Center for the Arts	Wachiska Audubon Society
Make-A-Wish Foundation of Nebraska	Equal Distribution to all Community Services Fund members, and the Community Services Fund operating fund
The Mediation Center	Community Services Fund of Nebraska – Operating Fund
Mothers Against Drunk Driving	
The Nature Conservancy	
Nebraska Appleseed	

Today, employee contributions through workplace giving campaigns raise approximately \$3 Billion a year nationwide. To find out more about CSF, visit our website at <http://www.communityservicesfund.org>.



We're on Facebook: [Facebook.com/communityservicesfund](https://www.facebook.com/communityservicesfund)

Please "like" us on Facebook and get updates on all of the good work our member agencies are doing in your community and how you can show your support.



Community Services Fund Executive Director, Kiersten Hill (left) and President, Abbigail Swatsworth (right) present the Rising Star Award to Jessica McMullen, Campaign Committee Chair at National Research Corporation.

## Congratulations National Research Corporation 2009 Community Services Fund Rising Star Award Winner

Thanks to a variety of innovative strategies, NRC revitalized their 2009 employee giving campaign. Just to give you an idea of what was so successful about this campaign, you can take a quick look at their results. **2009 NRC Campaign Results:** employee giving and participation doubled, campaign awareness increased, committee morale improved and time investment decreased, gained new traditions and best practices to build on, a recommitment to the main purpose of giving, not just two weeks full of events, campaign was a true reflection of their workplace: the people and the personalities, NRC employees took ownership of and pride in the campaign.

Amazing results! Thank you to NRC for your commitment to Community Services Fund and donor choice in your workplace!



**Community Services Fund of Nebraska**

[CommunityServicesFund.org](http://CommunityServicesFund.org)

# 2009-2010 Campaign Worksites

ACLU Nebraska	Lincoln Public Schools
Arter Group/Devco	Nanonation
Bahr Vermeer Haecker Architects	National Research Corporation
Bailey Lauerma & Associates	Nat'l Rural Electric Cooperative Assn.
City of Lincoln	Nebraska Domestic Violence Sexual Assault Coalition
Clark Enersen Partners	Nebraska Humanities Council
Cline Williams	Nebraska State Education Assn
Cooper Foundation, Inc.	Nebraska Trucking Association
Crete Carrier Corporation	NIFA
Duncan Aviation	Pinnacle Bank
EducationQuest Foundation	Planned Parenthood of the Heartland
Girls Scouts - Homestead Council	Rembolt, Ludtke LLP
Grafton & Associates	Strain Slattery Barkley & Co
Harding & Schultz	State of Nebraska
HBE Becker, Meyer, Love LLP	Southeast Community College
Hudson Bay Companies	Swanson Russell Associates
HWS Consulting Group Inc.	Teledyne/ISCO
Inspro Insurance	Telesis, Inc.
Jacob North Printing Co.	The Mediation Center
Kawasaki	Travel & Transport
KLKN-TV	UNICO
Knudsen Berkheimer	Union College
Lancaster County	University of Nebraska-Lincoln
Lester Electrical	Wachovia Investments
Lincoln Children's Zoo	Wells Fargo Bank
Lincoln Community Foundation	Woods & Aitken
Lincoln Electrical System Local 1536	Woods Charitable Fund
Lincoln Housing Authority	
Lincoln Journal Star	
Lincoln Memorial Funeral Home	

## Message from the Executive Director



Kiersten Hill

When I came to Community Services Fund in 2007, I was excited to join an organization that was on solid foundation, but had such amazing potential. In the last few years I've been so pleased to work with an incredible group of member agencies and community leaders who are committed to the ideals and opportunities available for Community Services Fund.

We've been spending a great deal of time over the last few years building our infrastructure to put Community Services Fund in the position to expand and change to meet the future needs of donors and nonprofits alike.

Did you notice our 'new look'? Community Services Fund has a new logo and overall appearance. 'Community Services Fund connects donors to causes they care about most.' This new mission statement clearly and simply defines what we do. On page 2 of this report, you can see the new set of core values that Community Services Fund has set to define what kind of organization we are and the ideals we stand behind. Formalizing these ideals helps us to clearly differentiate who we are and what we do.

But, we couldn't do our work without your support! Your financial contributions to our member agencies, enhance their budgets and increase the effectiveness of their individual missions. And, those contributions help us to spread the message of donor choice in the workplace. We thank you for supporting Community Services Fund and our members and we look forward to sharing more exciting changes coming to Community Services Fund in the very near future.

Best Wishes,  
Kiersten Hill, Executive Director



**Community  
Services Fund  
of Nebraska**

215 Centennial Mall South, Suite 509  
Lincoln, Nebraska 68508  
(p) 402.489.4332 (f) 402.441.0649  
director@communityservicesfund.org  
CommunityServicesFund.org



We're on Facebook: [Facebook.com/communityservicesfund](https://www.facebook.com/communityservicesfund)